

During the November period of Remembrance many workplaces, and hence many chaplains, hold services. As 2025 is the 200th anniversary year of passenger railway travel, Southeastern took the annual service in Dover to another level. The service was held as usual in Cruise Terminal One at the Port of Dover, once the Marine Station, but this year we had the Cavell Van as the centre-piece rather than the war memorial. The van was used to bring back the only 3 bodies repatriated from World War One – a nurse and a merchant seaman, both executed by the Germans, and the Unknown Warrior (click on the link here [Cavell Van](#).) See also [War Memorial Torch](#).

There were 20 standards from veterans' groups and over 30 wreaths were laid by a wide range of people from civic leaders to private families.

For the first time we were accompanied by the band of the Duke of York's Royal Military School who had provided the honour guard when the Unknown Warrior had returned to Britain in 1920.

A period of Remembrance

Because of the national significance of the event, the first time the van has been part of a Remembrance Event, the service was filmed for Meridian News and made the second story that evening.

The service will probably feature in the next fly-on-the wall series of Dover 24/7 about the varied activities of the Port of Dover.



Billy, Sean, Sandra, David, Dylis, Richard

The service was led by 6 chaplains, [David, Richard, Sean and Billy](#) from the KWM Dover Team, with [Dylis George](#) the Railway Mission Chaplain to Southeastern and [Rev Sandra Marsh](#), Chaplain to the K&ESR where the Van normally lives. Preparations were challenging this year as it required a length of railway track, as well as the 32' railway wagon, to be manoeuvred into the terminal as the real rails were taken up in the late 1990s.

Canon David Slater (KWM Trustee)

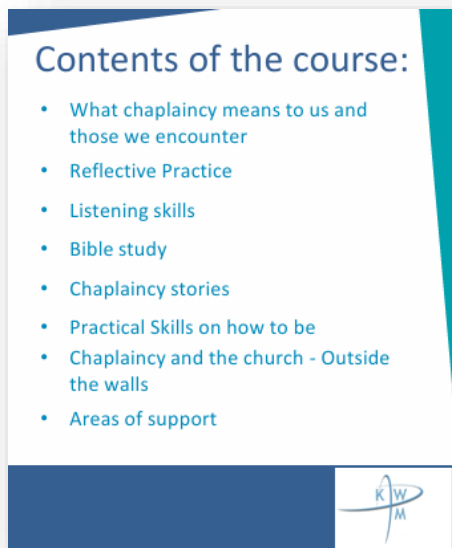
Every day is a school day!

On Saturday 20th September, David Slater and Penny Culliford ran the first of KWM's updated basic chaplaincy training sessions at St George's Church, Gravesend. With attendees from Gravesend, Dartford, Bexleyheath, Ashford and Medway, we had a great mix of new and experienced chaplains which meant we could draw on expertise and share knowledge with those just starting in chaplaincy.

The new course had been redesigned and updated, using Kent Workplace Mission's wealth of previous training notes, wisdom from other chaplaincy training organisations and David's, Madeleine's and Penny's training backgrounds. In addition, we polled existing chaplains to ask what they wish they had known when they started out. What we designed, was a flexible course that could be run online over three evenings or as a one-day, in-person course.



The course combined “chalk and talk” with discussion and feedback. Supported by slides, including videos, peer and group discussion, the day was varied and aimed to engage all the participants along with the all-important opportunities to meet and network with other chaplains.



The aim of the course was not to teach everything about being a chaplain, but to help people start safely and with confidence in the ministry God had called them to. It could also help identify those who felt chaplaincy wasn't for them.

One positive note was that it allowed a new town centre chaplaincy team to be trained together. St George's Rector, Rev Jim Fletcher, had identified potential chaplains from local churches, and they were able to learn together and get to know each other. They are aiming to launch early in the new year.

We aim to make the course a starting point and an engaging, reassuring, educational experience, and hope to run another course early in 2026.

If you would like to be involved, to be trained for the first time, to refresh your training or to share your experience, please let Penny penny@kentworkplacemission.org or Madeleine admin@kentworkplacemission.org know.

Penny Culliford (KWM Coordinating Chaplain)

Christ the Worker

Sunday 3rd May 2026

bless you

blessings be at work for you
as you are at work for us
kentworkplacemission.org



Hello!

Hi, how are you?

How has your week
been?

Good
morning!

These are some of the greetings that chaplains might use when they meet people. How did Jesus do it? When we read the gospels, we see Jesus meeting a number of people, either in their workplaces or about their daily business.

How does he greet them? What does he say? What changes when people encounter Jesus? What can we learn from Jesus' approach?

We will be exploring this theme of first encounters further in our **Christ the Worker** material for 2026 which will be available on our website in February 2026.

KWM Trustee Farewells ...

KWM bids farewell to **Revd Dr David Hinchliffe**. David recently concluded his role as **Chair of the South East District** of the Methodist Church, a position he held since 2019.

As for his next chapter: he has moved to the **Darlington District**.

We welcome **Revd Conrad Hicks**, the new District Chair, to the council of trustees to replace David.



Revd Dr David Hinchliffe



Major Richard Oliver

Major Richard Oliver joined KWM as a chaplain with the Port of Dover and Eurotunnel Team in early 2023 as part of his **Salvation Army** appointment to Folkestone. He became the nominated Salvation Army KWM Trustee in 2024.

“What struck me most was, this was a group of people who were not driven by their own Denomination, but more so driven by Kingdom Values. It soon became apparent that those making decisions for KWM were aligned to Kingdom Building and not Church Filling.

“I now am stepping down as a KWM Trustee after retiring from 30 years full-time ministry – but I will remain as a volunteer chaplain to continue in my mission to focus on the Church being ‘Outside the Walls’.”

Weekly Fellowship

Wednesdays, 10.00am-11.00am on Zoom

We really look forward to you joining us some time to share with us in an engaging hour of reflective Bible study and supportive prayer for the work of KWM. For joining details follow this link on our website: **[Weekly Fellowship | Kent Workplace Mission](#)**

or email: admin@kentworkplacemission.org

... and KWM Welcomes



Major Fiona Broom

Major Fiona Broom is currently serving as the Divisional Commander for the South East Division of the United Kingdom and Ireland Territory in **The Salvation Army**, a role she assumed on 1 July 2024.

Fiona has been a Salvation Army officer for 28 years. Before this appointment, Fiona served for eight years in the South West as the Divisional Mission Enabler (DME) and Divisional Mission Officer (DMO). Her earlier ministry included corps officer appointments in Buckhaven, Leith, Fraserburgh and Bolton, where she was deeply involved in local church leadership and community outreach.

In July 2024, she succeeded Majors Mark and Linda Herbert in the South East Division, bringing with her a wealth of experience in mission strategy, leadership development, and pastoral care.

Outside of work and ministry she enjoys reading, music, bodyboarding, spending time with friends and family and almost anything with a bit of adrenaline involved!

Fiona looks forward to getting involved as a Trustee at Kent Workplace Mission.

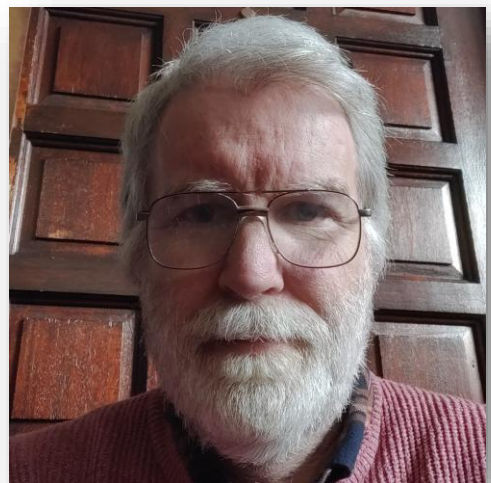
We also welcome: **The Ven Sandra McCalla – Anglican Archdeacon, Rochester Diocese.**

Revd Nigel Riley – South East Baptist Association

“After working for years as a French and German teacher - followed by a stint as a Driving Instructor and two years serving in a Christian boarding school in southern India - I began training for Baptist Ministry in 2009 and was ordained in 2012.

“Although I grew up in Kent, it was a huge surprise when God brought me to Maidstone Baptist Church as Senior Pastor in 2023. But God is good, and we feel settled here. Apart from my commitments to church and to KWM, I am part of the NHS Hospital Chaplains team, and I support Maidstone Street Pastors too.

“My wife Margaret and I have four married sons and two grandchildren. I am a keen musician, and I love long walks and playing snooker.”



Revd Nigel Riley

Paul, in his first letter to the Corinthians at 13:13, writes:

**“In this life we have three great lasting qualities,
faith, hope and love. But the greatest of them is love”**

The word love is derived from the Greek word agape which refers to unconditional, selfless and divine love. It is a love for God and humanity that persists regardless of circumstances.

I have reached that stage in life where I can honestly say that there are more years behind me than before, which leads me, perhaps late in the day, to consider how I will be remembered.

Will it be for my achievements? Did I receive an award or medal, such as a knighthood or OBE? Did I reach the pinnacle of my profession? Was I able to count famous people or those in high authority as friends and colleagues?



Or will it be as much about how I treated people irrespective of their status, colour or outlook on life? Whether I knew them well or whether they were strangers to me? Did I love my neighbour as myself showing compassion, patience and kindness towards them? Was I willing to give my time, talents and even money to charities and good causes? Being there for people in the everyday as well as the good times and the not so good?

Kent Workplace Mission offers professional chaplaincy services to places of work in Kent, Medway, Bromley and Bexley. Chaplaincy for us is all about being alongside our neighbours at work, and serving their welfare and wellbeing needs, whether they are people of faith or none, and this is provided in a confidential, open-minded listening and informed manner. Now that is something worth being remembered for.

Paul Buckley (KWM Trustee)

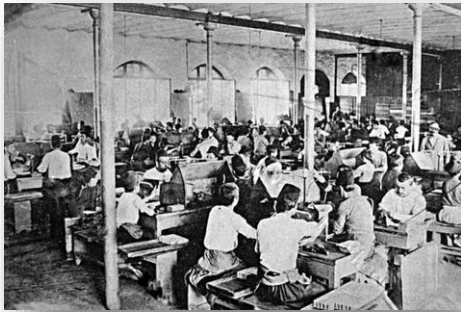
All work and no play

The nature of how we manage time and the nature of how we manage work is ever changing. The workplace is also ever changing.

In the middle ages in England there was much less of a fixed pattern of a working week. People generally worked when they could, when there was enough light and when there was nothing else they should be doing. Times of rest or other activity tended to be set by the church calendar – with Sundays and many local or universal feast days being days to do other things – or by the realities of the turning of the seasons. Deep in the winter the short days meant longer periods of darkness, agricultural harvests in the Summer meant long days of work.



The Gleaners by Jean-François Millet



Samsun Tobacco Factory Early 20th Century



Visionable.com

By the second half of the twentieth century, however, the concept of the five-day working week and the weekend break had become something of a standard in this country. This did not, though, mean that everyone worked like this. Shops and the hospitality industry worked while others were at leisure. Many factories maintained 24-hour production seven days a week and similar shift patterns were seen (and still are) in the emergency and healthcare service sectors.



Canterbury Cathedral Christmas Market

But the seasons still play a part. In Bluewater just before the end of October I went into the Christmas shops for the first time. In the Precincts of Canterbury Cathedral, the Christmas Market opened in the middle of November.

This is as much seasonal work as fruit picking or grass cutting. And Christmas, of course, is a time – and an extended holiday for many, but not all – that is dictated by the calendar of the Christian year.

So maybe not everything has changed.

With best wishes for Christmas 2025 & for the New Year 2026.

The Ven Will Adam (KWM Chair)



**From all at Kent Workplace
Mission:
May God bless you with love, joy
and peace this Christmas**



KWM Trustees and Office Holders

KWM is a Local Ecumenical Partnership being a mission partner of Churches Together in Kent, and so has trustees from the partner denominations, as well as trustees representing the membership. Trustees are appointed, and officers elected, annually.

Denominational Trustees

Anglican Rochester Diocese

Canon Ellen Couzens and Ven Sandra McCalla

Anglican Canterbury Diocese

Ven William Adam and *one vacancy*

South East Baptist Association

Revd Nigel Riley and *one vacancy*

Catholic Archdiocese of Southwark

Revd Michael Dale and Fr Gary Dyer

South East Methodist District

Revd Conrad Hicks and Revd Naomi Oates

South East Division Salvation Army

Major Fiona Broom *and one vacancy*

Southern Synod United Reformed Church

Richard Blackwell and John Ellis

Members' Trustees

Paul Buckley

Jennifer Mulrooney

Canon David Slater

Jacky Trice

Alan Wood

Officers

Chair

Ven William Adam

Vice-Chair

John Ellis

Acting Secretary

Madeleine Shepley


Treasurer

Jennifer Mulrooney

Contact

 kentworkplacemission.org

 admin@kentworkplacemission.org

 07423 767 051



Registered Charity No. 1105783